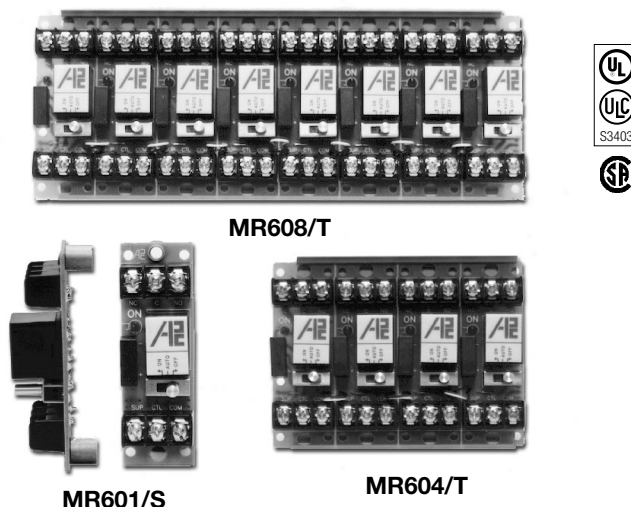




LIFE SAFETY & INCIDENT MANAGEMENT

Manual Override Relays

MR600 Series



Overview

The MR600 Series Relays provide SPDT, 10 Amp contacts with manual override capability by means of an ON-AUTO-OFF switch.

The relay requires a 24 Vac or 24 Vdc power source supplied by the controlling system. With the switch in the ON position the power relay is energized. With the switch in the AUTO position the relay is allowed to operate as signaled by the controlling system. With the switch in the OFF position the relay cannot be energized.

Each relay position contains a high intensity LED which, when illuminated, indicated the relay coil is energized.

Individual relay circuits may be snapped apart from standard four or eight-position modules, and are also available in the single circuit configuration.

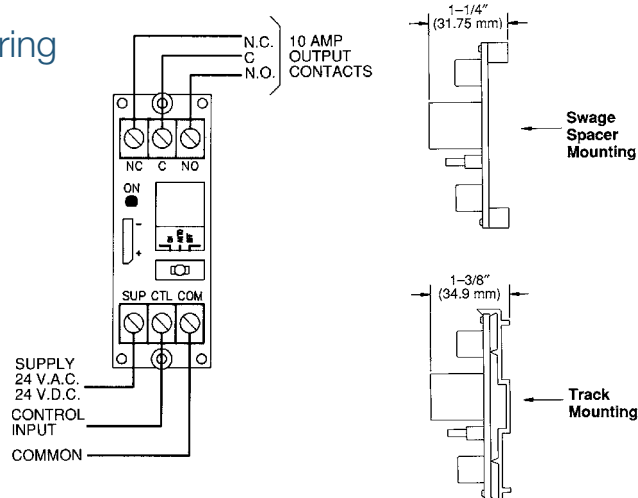
The common power to each relay position is bussed on the printed wiring board which permits power to be connected only once per multi-position module.

These devices are ideal for applications where local or remote contacts are required for control of electrical loads. They are suitable for use with HVAC, Temperature Control, Fire Alarm, Security, Energy management, and Lighting Control Systems.

Standard Features

- Each relay position contains 10 Amp SPDT contacts
- Each relay position contains an on-auto-off switch for manual override or external input control
- 24 Vac or 24 Vdc operation
- Each relay position contains a red led to indicate relay is energized
- Track mounting or metal swage spacer mounting
- Bussed power between individual relays which permits only two power wires per module
- Snap-apart construction — single relays may easily be removed from large module

Wiring





LIFE SAFETY & INCIDENT MANAGEMENT

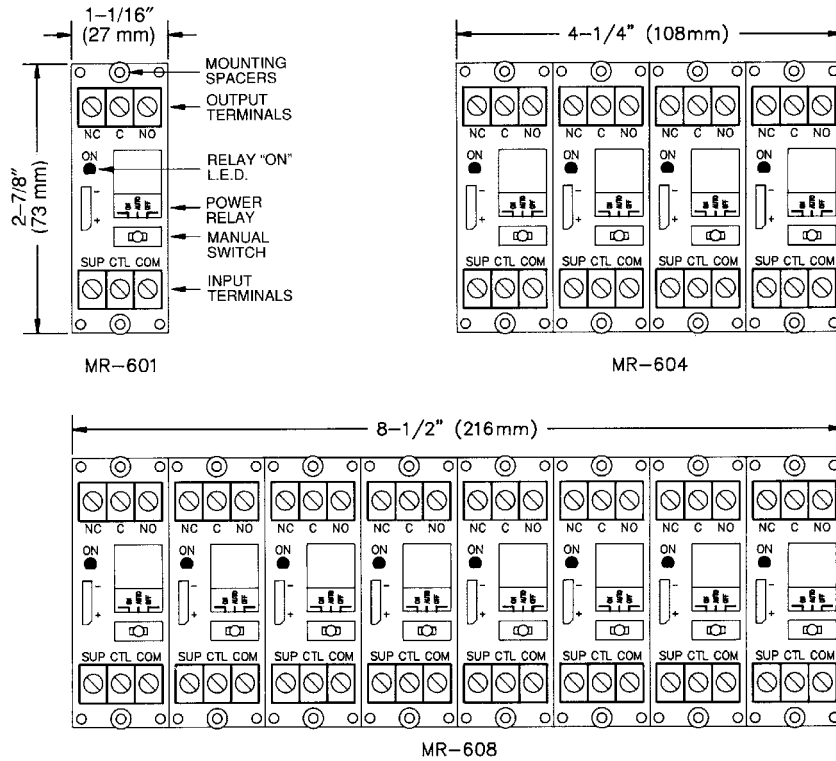
Contact us

Phone: 800-655-4497 (Option 4)
Email: edwards.fire@carrier.com
Website: edwardsfiresafety.com

8985 Town Center Pkwy
Bradenton, FL 34202

© 2020 Carrier
All rights reserved.

Installation



Specifications

Power Requirement	24 Vac or 24 Vdc @ 15 mA per position
Relay Contacts	10 Amps @ 120 Vac; 10 Amps @ 24 Vdc
Relay Data	UL Recognized, CSA Approved
Ambient Temperature	-58°F to 185°F (-50° to 85°C)

Ordering Information

Model	Description
MR601/T	Single SPDT relay with LED , switch and mounting track
MR604/T	Four-position SPDT relay with LEDs, switches and mounting track
MR608/T	Eight-position SPDT relay with LEDs, switches, and mounting track
MR608/S	Eight-position SPDT relay with LEDs, switches and mounting spacers